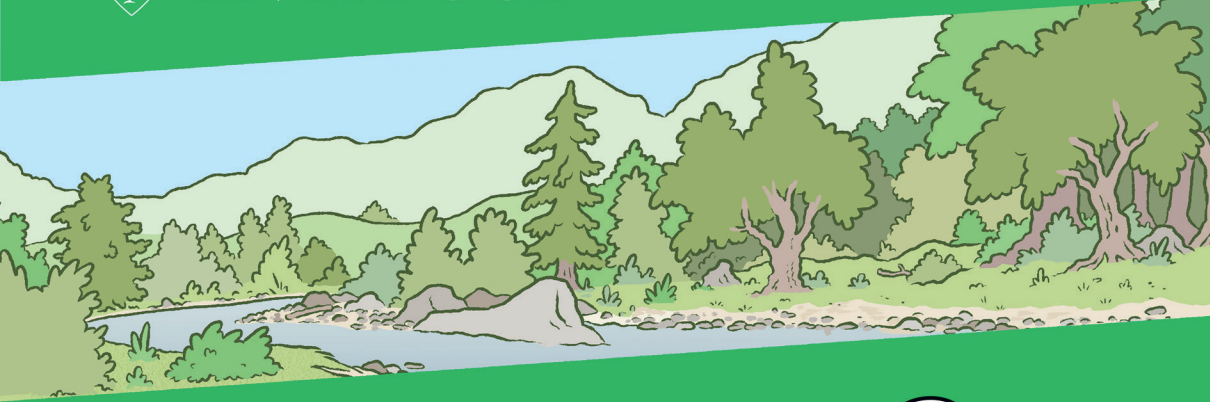




UNIVERSITY OF  
LIVERPOOL



# MAKING AN IMPACT

WITH THE DEPARTMENT OF EVOLUTION,  
ECOLOGY AND BEHAVIOUR



CONDATIS: MAPPING  
NATURE'S FUTURE

Beautiful nature...

But I know that the environment is changing.

As the climate warms, and cities expand, many species of plants and animals will disappear... unless they can move.

Move? How are we meant to know where to go?

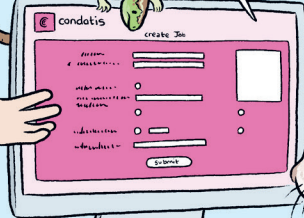
All we know is, if we go in that direction we'll be dicing with death.

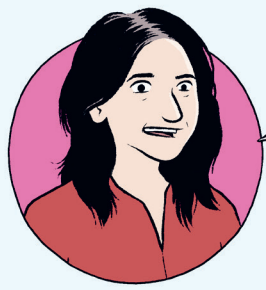
We can't plan for a future that's years or decades away!

Don't worry! We've developed a web tool to help.

It's called **Condatis** and it lets us find out all the different routes you could travel.

'Flow'? 'Bottlenecks'? How do you work this thing?





We take information on where you like to live, and how far you can move in your lifetime.

Keep up guys!

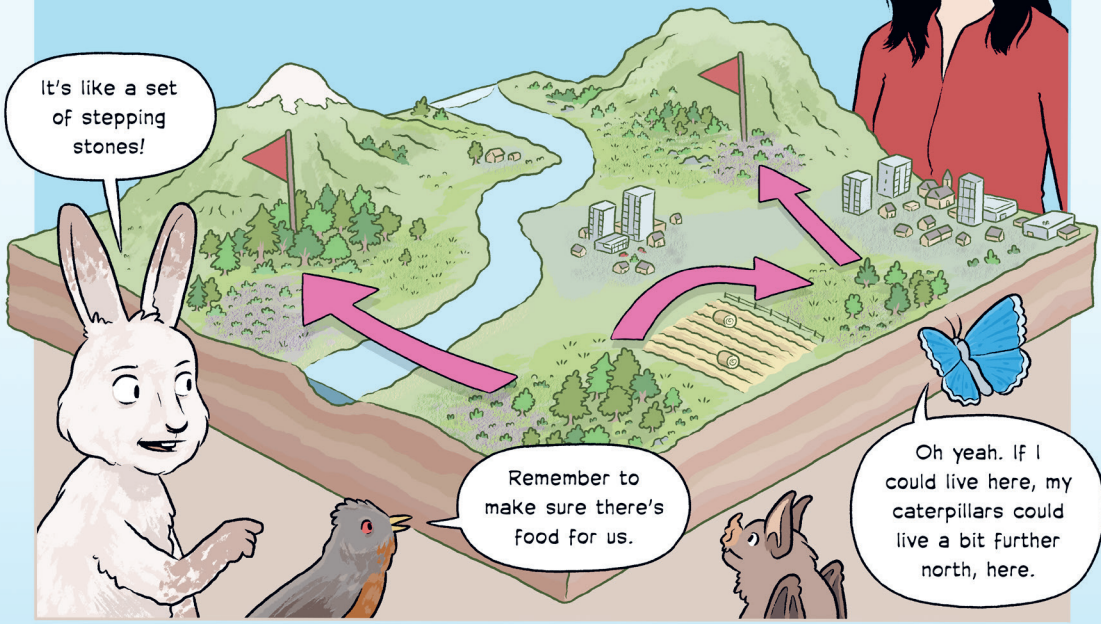


Condatis uses this information to help us choose where to put new habitats or restore old ones.

Huge benefits could come from a little extra habitat in just the right places



It's like a set of stepping stones!

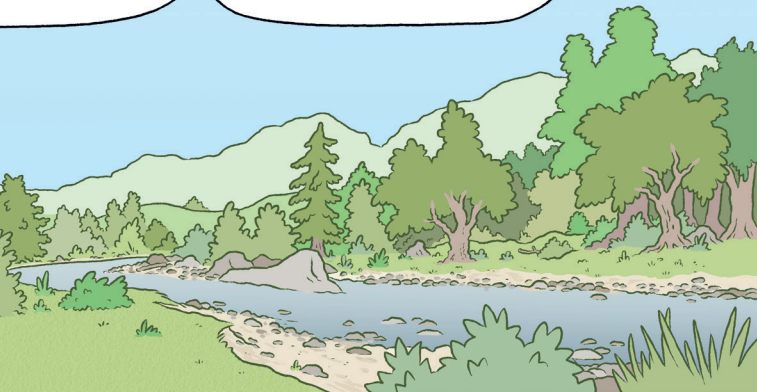


Remember to make sure there's food for us.

Oh yeah. If I could live here, my caterpillars could live a bit further north, here.

With habitat destruction and climate change nature's future seems bleak. But it doesn't have to be.

Our work with Condatis finds new homes for wildlife, protecting the natural world for the future.





UNIVERSITY OF  
LIVERPOOL

The Department of Evolution, Ecology  
and Behaviour is **making an impact.**

We study the biology of animals, plants  
and microbes to understand the  
processes driving the natural world.

Discover how we're securing a future  
for nature with our cutting edge  
software, **Condatis.**

---

To find out more about this project, and other  
work in the Department, visit:

**[liverpool.ac.uk/evolution](https://liverpool.ac.uk/evolution)**

Written by Dr James Hall and Edward Ross. Illustrated and designed by  
Edward Ross. Thanks to Dr Jenny Hodgson.